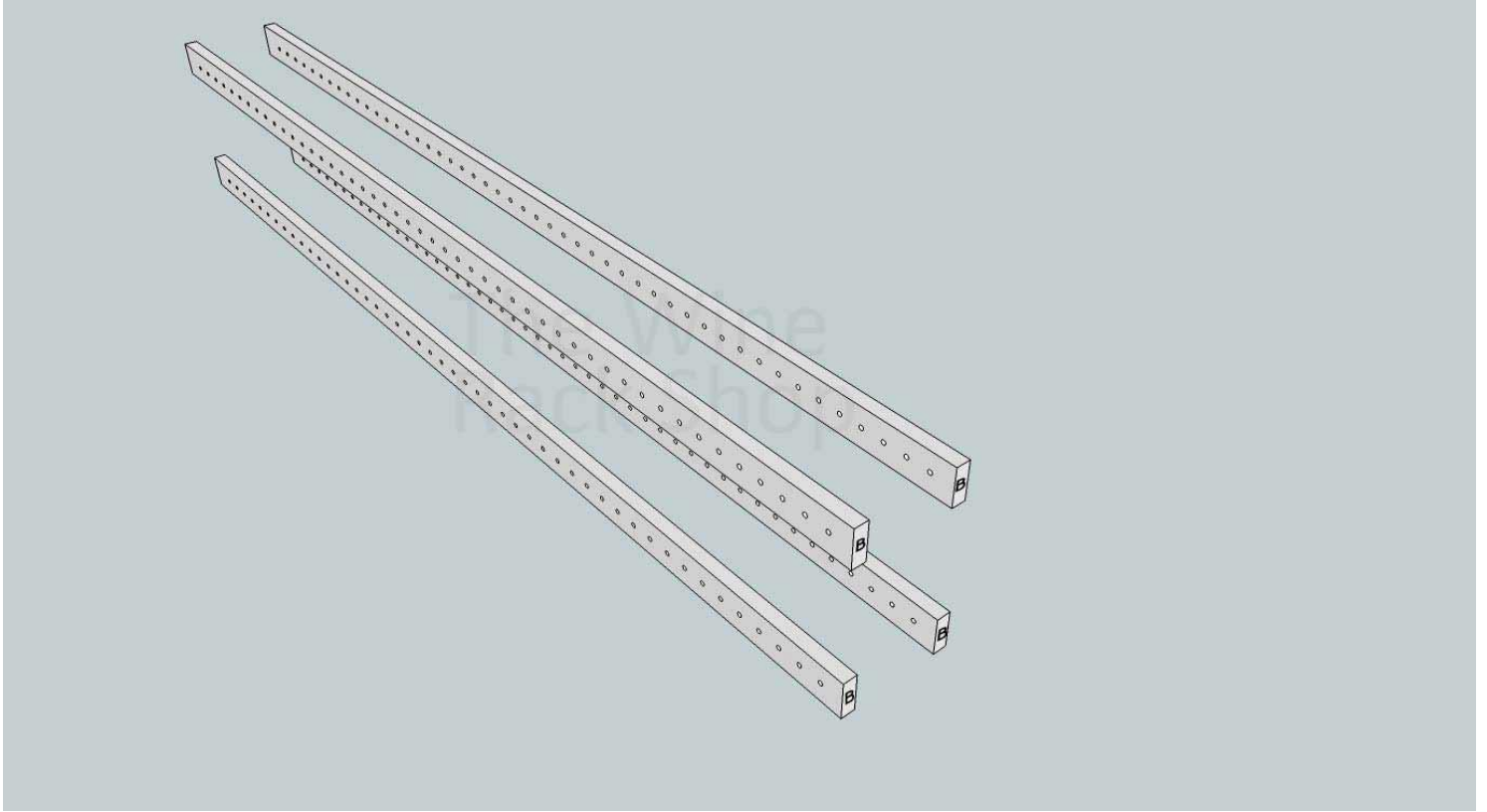
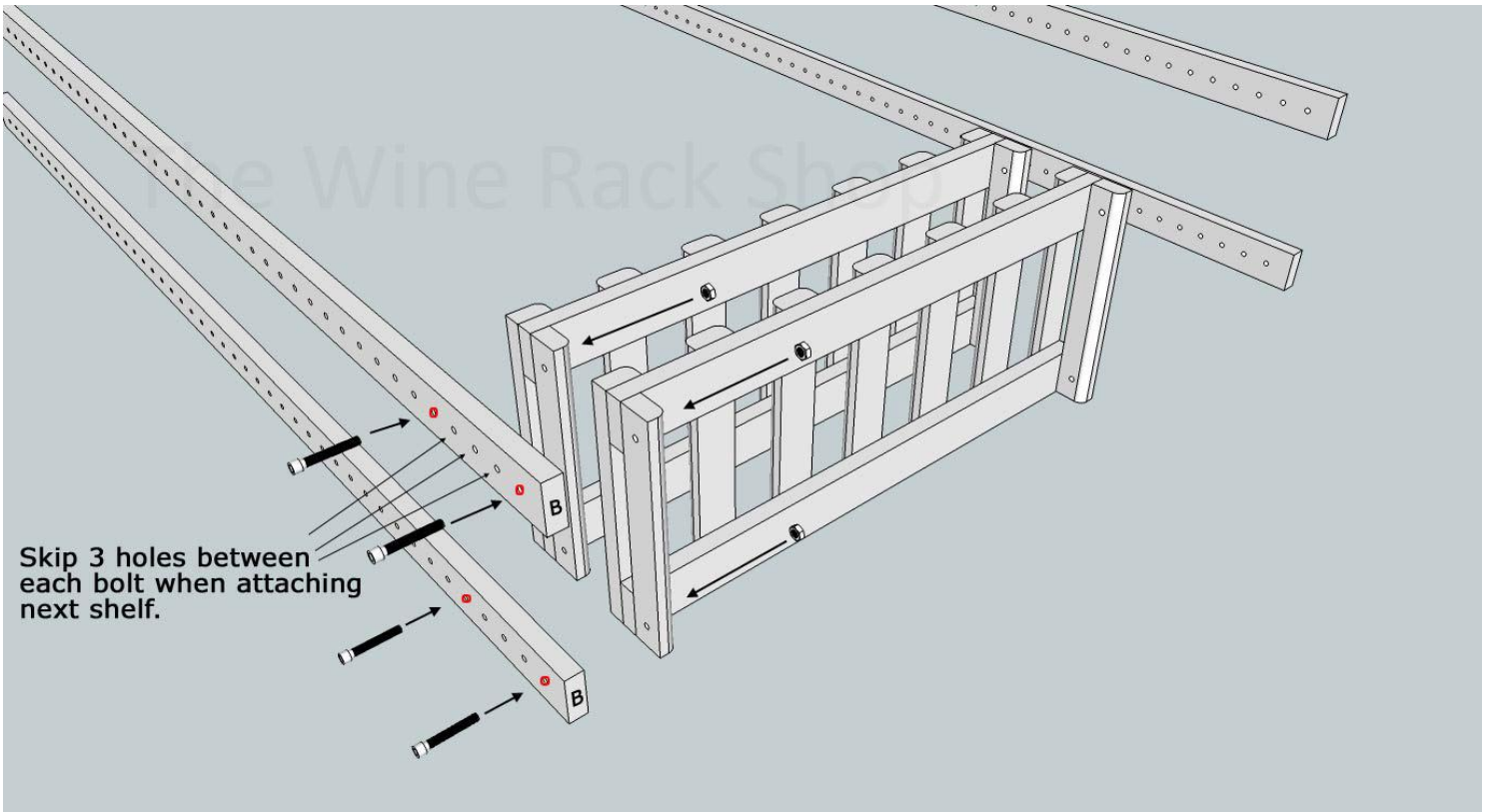


Arch Wine Rack Assembly Instructions:

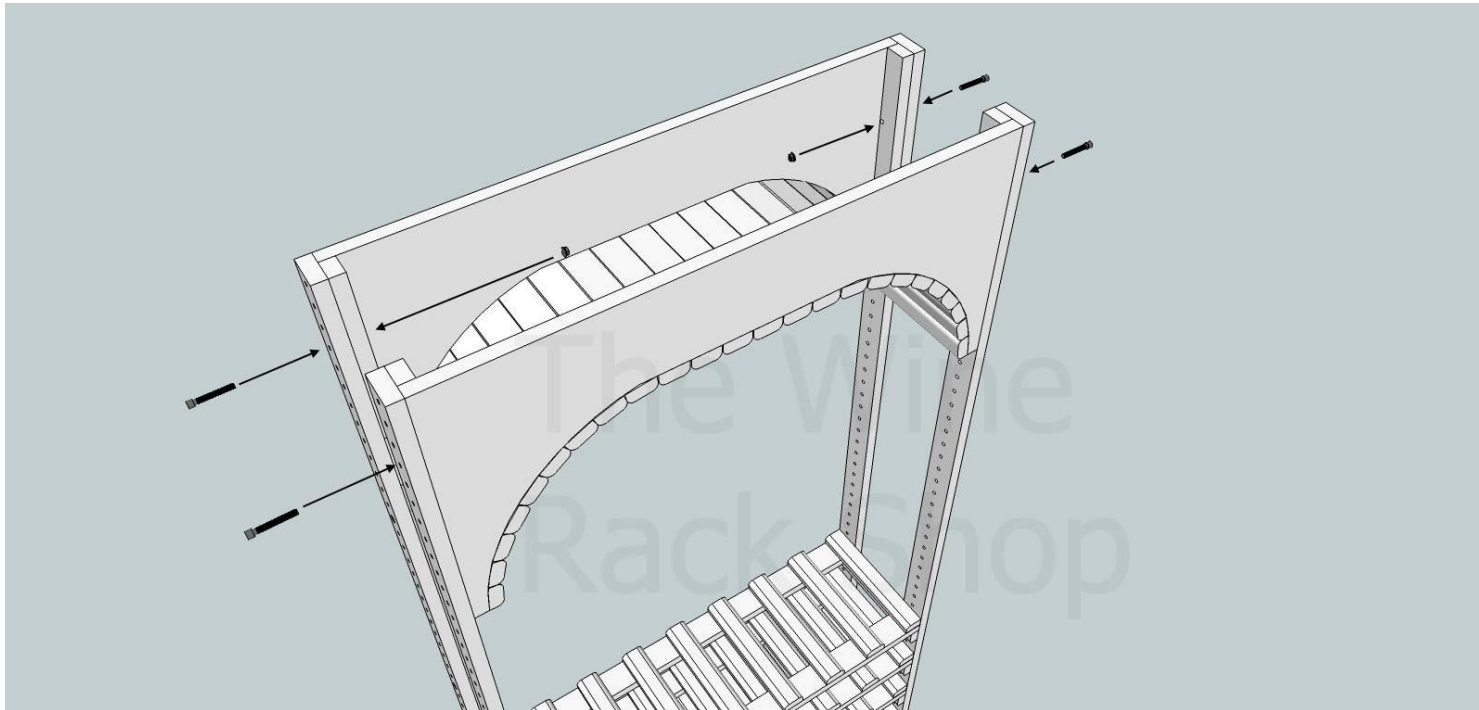
Step 1. Align all rack uprights with ends marked “B” at the same end. This end of rack uprights is the bottom of the rack and will sit on the floor.



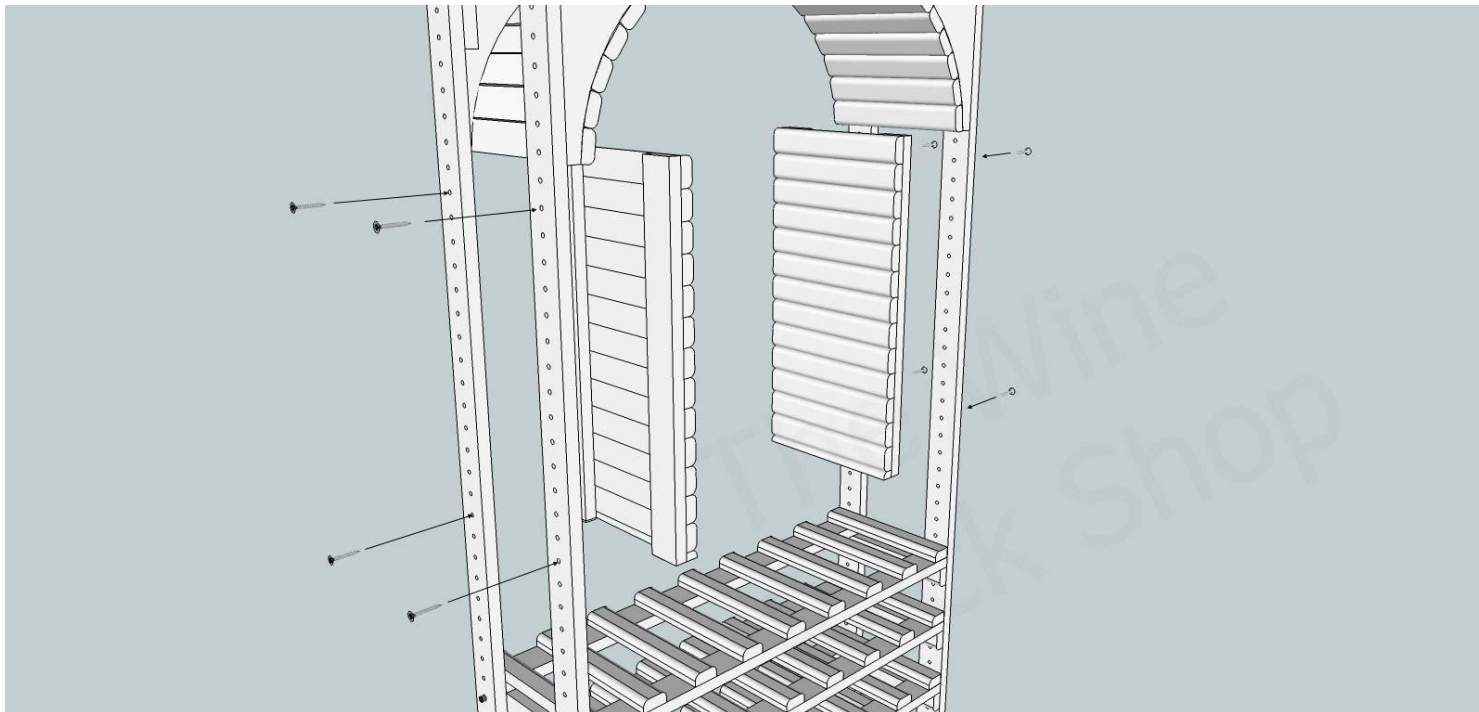
Step 2. Thread bolt through pre-drilled lowest(1st)rack upright hole and pre-drilled shelf hole. Hand-tighten nut on inside of shelf. Skip 3 holes between each bolt and repeat Step 2 for each shelf. Do this for all 4 rack uprights.



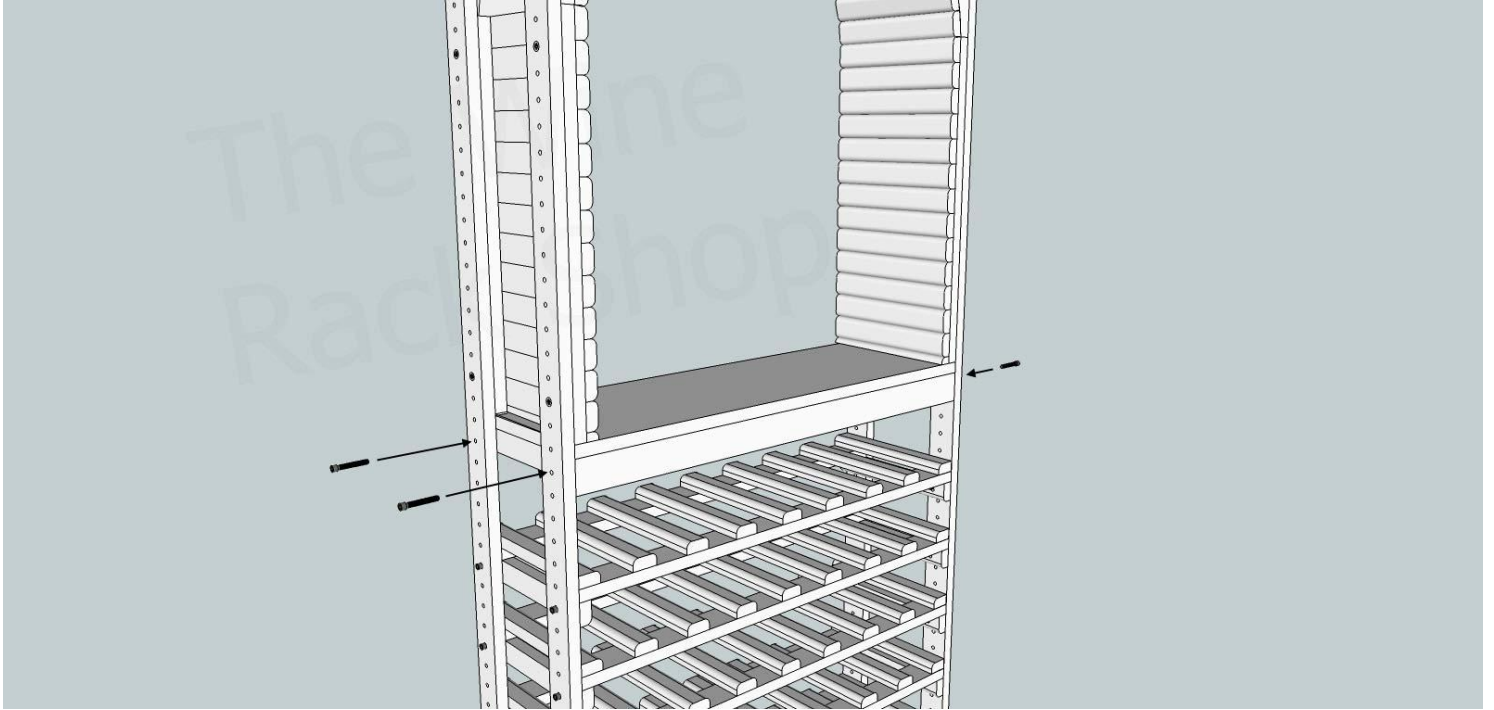
Step 3. Attach arch assembly to rack uprights. Bolts will pass through rack upright and through hole in arch assembly. Thread nut onto bolt on inside of arch assembly. **Repeat this step** for all 4 rack uprights.



Step 4. Align arch side panels with arch assembly. Attach arch side panels to rack uprights using (4) wood screws for each side panel. Insert wood screws through holes in rack uprights and into arch side panels.



Step 5. With fascia of countertop toward front of rack, align countertop beneath arch side panels. Attach countertop to rack uprights in same fashion as shelf attachments. **Tighten all bolts completely for all shelves, arch assembly and countertop.**



Step 6. Add wine to your completed rack.

